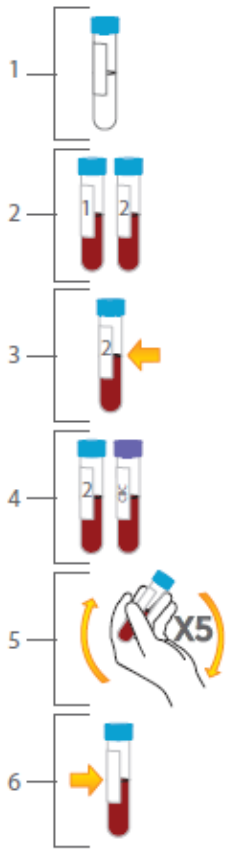


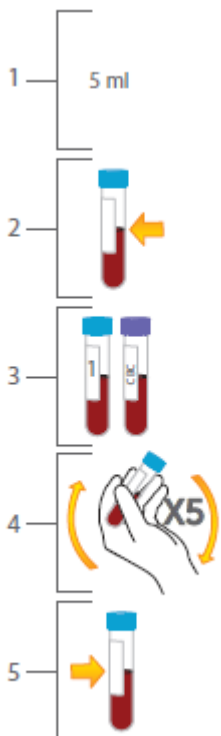
Aspirin Inhibition (mnemonic) Sample Collection Procedure



Direct Venipuncture

Sample collection directly into vacuum collection tubes

1. Use the two 2mL Greiner Bio-One partial-fill vacuette tubes with 3.2% sodium citrate (blue top) provided in this kit.
2. Collect the blood sample using the **largest gauge needle possible**. Butterfly needles are OK to use. First, collect a discard tube (at least 2mLs) making sure the discard tube does not contain any platelet inhibiting substances (e.g. EDTA.)
3. Fill the two sample tubes to the black line (the tubes will be $\frac{1}{2}$ full.) Do not underfill.
4. If drawing blood for a CBC at the same time, fill the CBC tube last.
5. **Gently invert** tubes at least 5 times to ensure complete mixing of contents. Samples with evidence of clotting should not be used. Do not shake, as that may give incorrect results.
6. Label the tube appropriately with EPIC label or patient ID, including date and time of draw. **Do not refrigerate sample. Do not send sample through pneumatic tube system. Please walk samples to the Core Laboratory (FB.2.441.)**



Indwelling Catheter

1. Discard the first 5mLs from an indwelling catheter to clear the line. Ensure the catheter is free of clots.
2. Immediately transfer blood into the two 2mL Greiner Bio-One partial-fill vacuette tubes with 3.2% sodium citrate (blue top) provided in this kit. Fill tubes to black line (the tubes will be $\frac{1}{2}$ full.) Do not underfill.
3. If drawing blood for a CBC at the same time, fill the CBC tube last.
4. **Gently invert** tubes at least 5 times to ensure complete mixing of contents. Samples with evidence of clotting should not be used. Do not shake, as that may give incorrect results.
5. Label the tube appropriately with EPIC label or patient ID, including date and time of draw. **Do not refrigerate sample. Do not send sample through pneumatic tube system. Please walk samples to the Core Laboratory (FB.2.441.)**